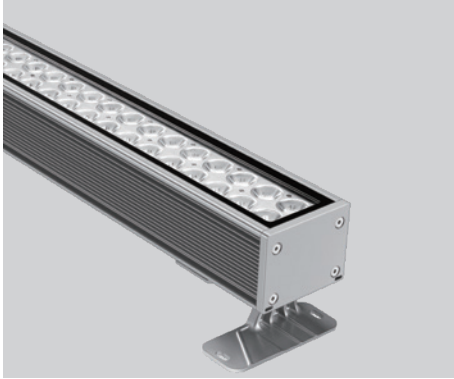


PRODUCT DATASHEET

Last information update: Mar. 2025



DELTA-12

0819W80

Linear LED wallwasher for outdoor applications

Technical Features

Power	80W
Input voltage	AC100-240V
Insulation class	I
Delivered flux	6,400 lm ±10%
Light distribution type	Symmetrical / elliptical
Beam angle	6°, 12°, 20°, 30°, 45°, 60° / 10°x70°
Light colour / CCT	2700K, 3000K, 4000K
CRI	80
Source type	LED
LED number	12
MacAdam step	5
Power supply	Built-in
Control	ON/OFF
Protection index	IP66
Impact resistance	IK08
Lifetime	50,000 hours Ta=25°C



Construction

High weather-resistant fluorocarbon painted extruded aluminum body, tempered glass cover, polycarbonate optical lenses.

Temperature Limits

Ambient operating temperature	from -20°C to +50°C
Storage temperature	from -40°C to +70°C

Installation

Surface mounted with adjustable bracket (standard).

Finish Colours

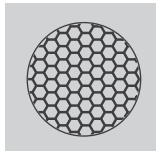
RAL9023 Pearl Dark Grey (standard). Other RAL colours on request.

Wiring

Power input cable OPEN END 1,000 mm

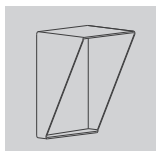


Optional Accessories

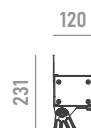


honeycomb louvre
*can not be ordered separately

A02



anti-glare visor
*can not be ordered separately



A06

Ordering Information

example: 0819W80.0006.2780.01+A02

0819W80 · [] · [] · [] + []

product	beam angle	light colour / CCT	finish colour	accessory
DELTA-12-80W	0006 6°	2780 2700K RA80	01 RAL9023	A02 honeycomb louvre
	0012 12°	3080 3000K RA80		A06 anti-glare visor
	0020 20°	4080 4000K RA80		
	0030 30°			
	0045 45°			
	0060 60°			
	1070 10°x70°			